

Test Report

Applicant: ZHANG BO TOYS FACTORY Number: SZHH01169038-002

XIACUN INDUSTRIAL ZONE, LIANXIA TOWN, Date: 19 July 2017
CHENGHAI DISTRICT, SHANTOU CITY,
GUANGDONG, CHINA

Sample Description
Product : REMOTE CONTROL AIRCRAFT SERIES

Model No. : D61

Additional Models : H26, H26WH, CF-906, CF-907, CF-908, CF-909, CF-910, CF-911, CF-912, CF-913, CF-914, CF-915, CF-916, CF-917, CF-918, CF-919, CF-920, CF-921, CF-922, CF-923, CF-924, CF-925, CF-926, CF-927, CF-928, CF-929, CF-930, CF-931, CF-932, CF-933, CF-934, CF-935, CF-936, CF-937, CF-938, CF-939, CF-940, CF-941, CF-942, CF-943, CF-944, CF-945, CF-946, CF-947, CF-948, CF-949, CF-950, CF-951, CF-952, CF-953, CF-954, CF-955, CF-956, CF-957, CF-958, CF-959, D61, D62, D63, D51, D52, D53, D86, D85, D65

Brand Name : N/A

Electrical Rating : Control Unit: DC 6.0V (4 x 1.5V AA batteries);
Receive Unit: DC 3.7V (1 x 3.7V Rechargeable Battery)

No. of Samples : 1

Date Received : 27 June 2017

Date Test Conducted : 27 June 2017 to 19 July 2017

Test Requested : Test for compliance with EN 62479: 2010

Test Method : EN 62479: 2010

Test Result : See the attached sheets

Conclusion : The submitted samples Complied with the above safety standard. But the note should be noted.

***** End of Page *****

Prepared and Checked By:

Approved By:

Sign On File
Abel Zhou
Senior Engineer

Jimmy Wen
Assistant Supervisor
19 July 2017

TRF no.: EN62479_a

Page 1 of 9



Test Report

Test Results:

Number : SZHH01169038-002

EN 62479: 2010

<u>Clause</u>	<u>Title/Description</u>	<u>Result</u>
1	Scope	
2	Normative references	--
3	Terms and definitions	--
4	Conformity assessment methods	Complied (See Note 2)
5	Assessment report	--

The additional models: H26,H26WH,CF-906,CF-907,CF-908,CF-909,CF-910,CF-911,CF-912,CF-913,CF-914,CF-915,CF-916,CF-917,CF-918,CF-919,CF-920,CF-921,CF-922,CF-923,CF-924,CF-925,CF-926,CF-927,CF-928,CF-929,CF-930,CF-931,CF-932,CF-933,CF-934,CF-935,CF-936,CF-937,CF-938,CF-939,CF-940,CF-941,CF-942,CF-943,CF-944,CF-945,CF-946,CF-947,CF-948,CF-949,CF-950,CF-951,CF-952,CF-953,CF-954,CF-955,CF-956,CF-957,CF-958,CF-959,D61,D62,D63,D51,D52,D53,D86,D85,D65 are same as the model: D61 in hardware aspect. Theirs difference in the appearance and model number.

***** End of Page *****



Test Report

Note:

Number : SZHH01169038-002

- (1) When determining the test conclusion, the Measurement Uncertainty of test has been considered.
- (2) Conformity assessment method refers to clause 4.2 of EN 62479: 2010, and compares with the Low-power exclusion level stated in Annex A of EN 62479: 2010. When SAR is the basic restriction, a conservative minimum value for Pmax can be derived, equal to the localized SAR limit (SAR_{max}) multiplied by the averaging mass (m):

$$P_{max} = SAR_{max} m \quad (A.1)$$

Example values of Pmax according to Equation (A.1) are provided in Table A.1 for cases described by the ICNIRP guidelines [1], IEEE Std C95.1-1999 [2] and IEEE Std C95.1-2005 [3] where SAR limits are defined. Other exposure guidelines or standards may be applicable depending on national regulations.

Example values of SAR-based Pmax for some cases described by ICNIRP, IEEE Std C95.1-1999 and IEEE Std C95.1-2005

Guideline / Standard	SAR limit, SAR _{max} W/kg	Averaging mass, m g	P _{max} mW	Exposure tier (a)	Region of body (a)
ICNIRP [1]	2	10	20	General public	Head and trunk
	4	10	40	General public	Limbs
	10	10	100	Occupational	Head and trunk
	20	10	200	Occupational	Limbs
IEEE Std C95.1-1999 [2]	1,6	1	1,6	Uncontrolled environment	Head, trunk, arms, legs
	4	10	40	Uncontrolled environment	Hands, wrists, feet and ankles
	8	1	8	Controlled environment	Head, trunk, arms, legs
	20	10	200	Controlled environment	Hands, wrists, feet and ankles
IEEE Std C95.1-2005 [3]	2	10	20	Action level	Body except extremities and pinnae
	4	10	40	Action level	Extremities and pinnae
	10	10	100	Controlled environment	Body except extremities and pinnae
	20	10	200	Controlled environment	Extremities and pinnae

(a) Consult the appropriate standard for more information and definitions of terms.

EN62479: 2010 Compliance of the RF Transmitter (REMOTE CONTROL AIRCRAFT SERIES used in General public) bases on test against standard ETSI EN 300 440 V2.1.1 (2017-03) (Report No.: SZHH01169038-001), and the measured maximum E.I.R.P. = -5.6dBm = 0.3mW for Control unit in 2.4GHz band, it is less than the RF Exposure limit 20mW.

***** End of Page *****



Test Report

APPENDIX:

Number : SZHH01169038-002

External Photo:



***** End of Page *****



Test Report

APPENDIX:

Number : SZHH01169038-002

Internal Photo (Control Unit):



***** End of Page *****

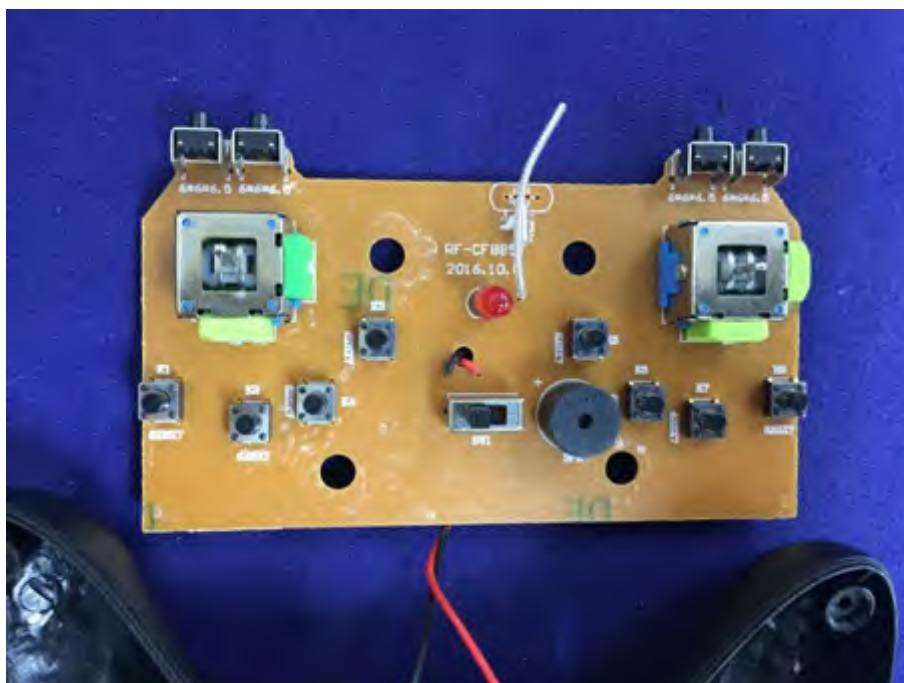
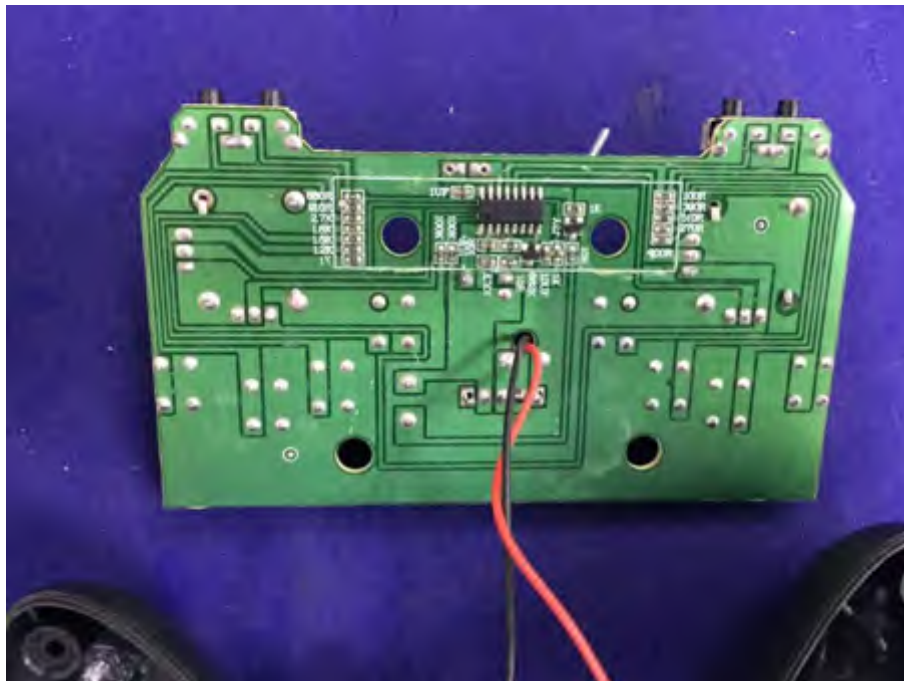


Test Report

APPENDIX:

Number : SZHH01169038-002

Internal Photo (Control Unit):



***** End of Page *****

TRF no.: EN62479_a

Page 6 of 9

Test Report

APPENDIX:

Number : SZHH01169038-002

Internal Photo (Receive Unit):



***** End of Page *****

TRF no.: EN62479_a

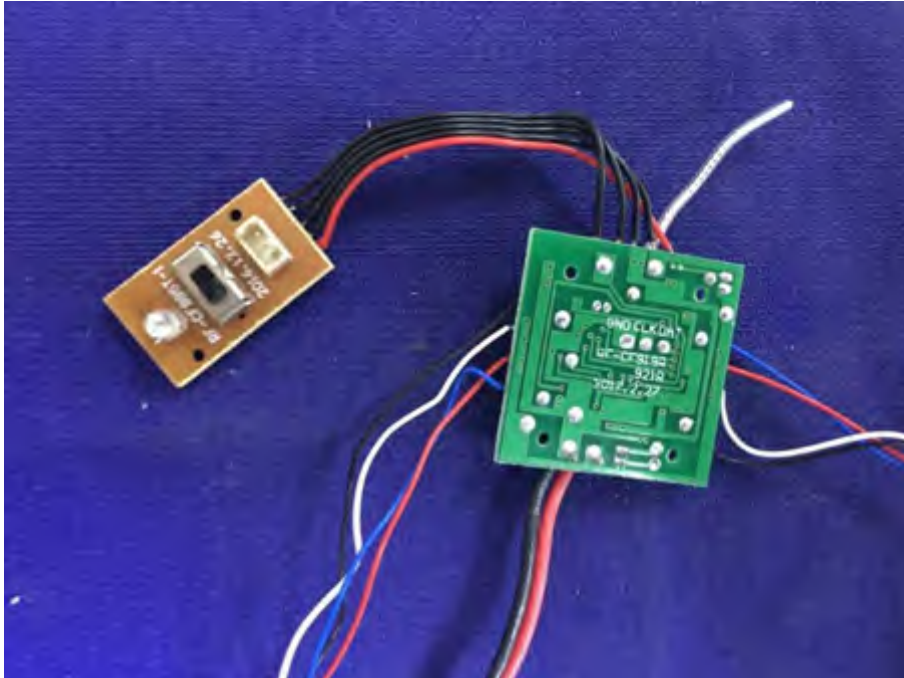
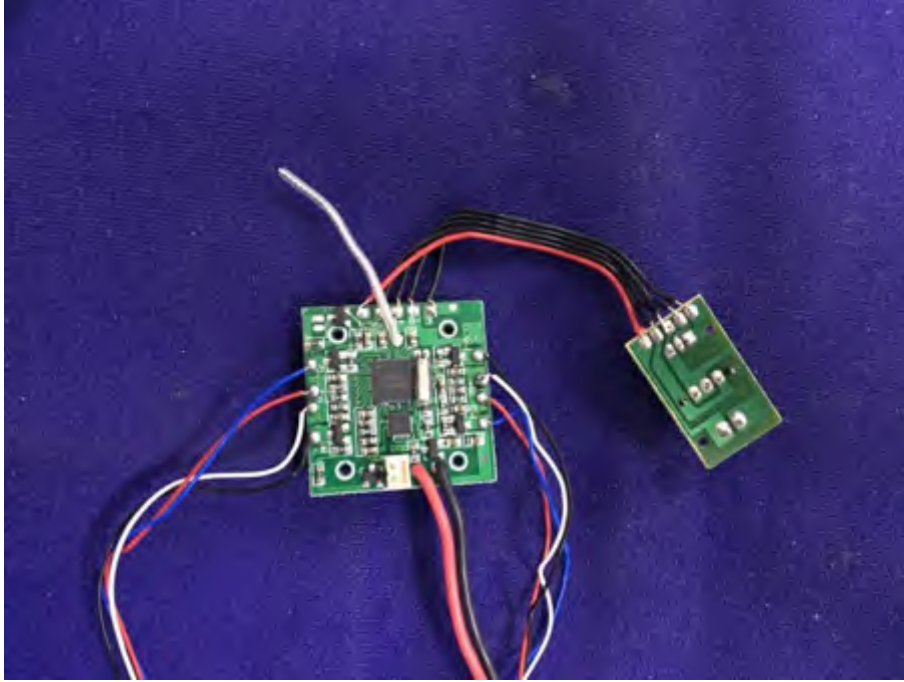
Page 7 of 9

Test Report

APPENDIX:

Number : SZHH01169038-002

Internal Photo (Receive Unit):



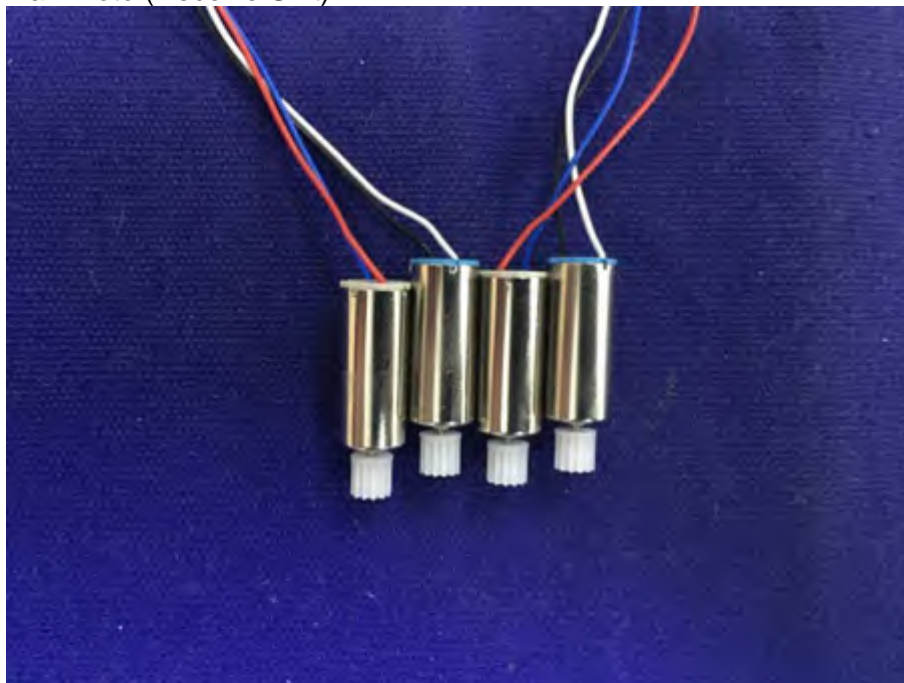
***** End of Page *****

Test Report

APPENDIX:

Number : SZHH01169038-002

Internal Photo (Receive Unit):



***** End of Report *****

TRF no.: EN62479_a

Page 9 of 9

